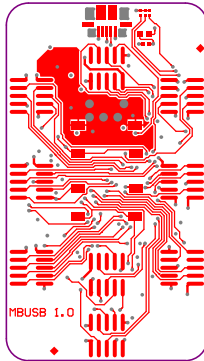


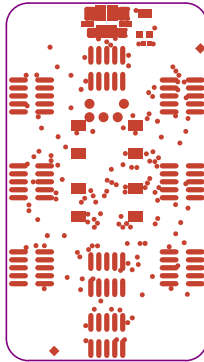
Doc.-Nr.: CSA-GADP-MBUSB-001
 Version/Date: 1.0 / 06.02.2012
 Layer: Top Silkscreen
 Filename: MountaineerUSB.GM16

Designer: C. Zill
 Copyright: CSA Engineering AG
 Hans Huber-Strasse 38
 CH-4500 Solothurn



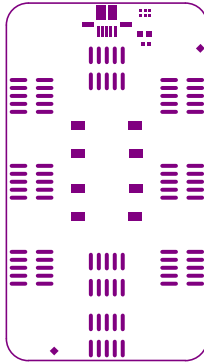
Doc.-Nr.: CSA-GADP-MBUSB-001
Version/Date: 1.0 / 06.02.2012
Layer: Top
Filename: MountaineerUSB.GTL

Designer: C. Zill
Copyright: CSA Engineering AG
Hans Huber-Strasse 38
CH-4500 Solothurn



Doc.-Nr.: CSA-GADP-MBUSB-001
Version/Date: 1.0 / 06.02.2012
Layer: Top Solder
Filename: MountaineerUSB.GTS

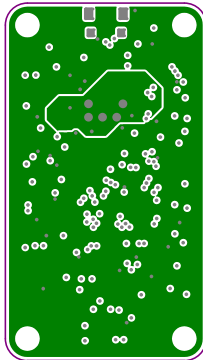
Designer: C. Zill
Copyright: CSA Engineering AG
Hans Huber-Strasse 38
CH-4500 Solothurn



Doc.-Nr.: CSA-GADP-MBUSB-001
Version/Date: 1.0 / 06.02.2012
Layer: Top Paste
Filename: MountaineerUSB.GTP

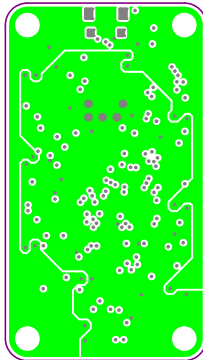
Designer: C. Zill
Copyright: CSA Engineering AG
Hans Huber-Strasse 38
CH-4500 Solothurn





Doc.-Nr.: CSA-GADP-MBUSB-001
Version/Date: 1.0 / 06.02.2012
Layer: Internal 1 (GND)
Filename: MountaineerUSB.G1

Designer: C. Zill
Copyright: CSA Engineering AG
Hans Huber-Strasse 38
CH-4500 Solothurn

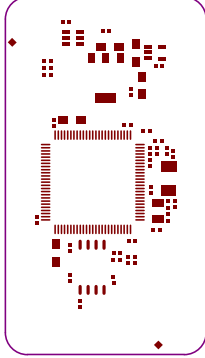


Doc.-Nr.: CSA-GADP-MBUSB-001
Version/Date: 1.0 / 06.02.2012
Layer: Internal 2 (3V3)
Filename: MountaineerUSB.G2

Designer: C. Zill
Copyright: CSA Engineering AG
Hans Huber-Strasse 38
CH-4500 Solothurn

CH-4500 Solothurn
Hans Huber-Strasse 38
CSA Engineering AG
C. Zilli
Designer: _____
Copyright: _____

Filename: _____
Layer: _____
Version/Date: _____
Doc.-Nr.: _____
MountainerUSB.CBP
Bottom Paste
1.0 \ 06.02.2012
CSA-GADP-MBUSB-001

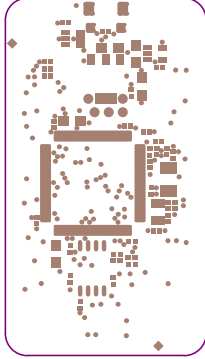


CH-4500 Solothurn
Hans Huber-Strasse 38
CSA Engineering AG
C. Zilli

MountainerUSB.GBS
Bottom Solider
1.0 \ 06.02.2012
CSA-GADP-MBUSB-001

Copyright:
Designer:

Filename:
Layer:
Version/Date:
Doc.-Nr.:

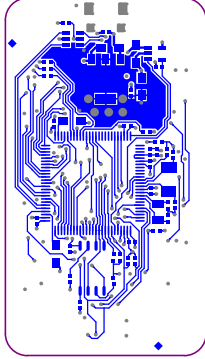


CH-4500 Solothurn
Hans Huber-Strasse 38
CSA Engineering AG
C. Zilli

MountainerUSB.GBL
Bottom
1.0 \ 06.02.2012
CSA-GADP-MBUSB-001

Copyright:
Designer:

Filename:
Layer:
Version/Date:
Doc.-Nr.:



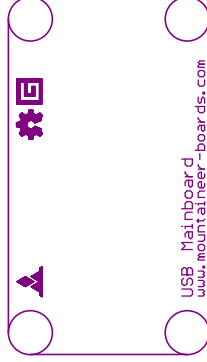
CH-4500 Solothurn
Hans Huber-Strasse 38
CSA Engineering AG
C. Zill

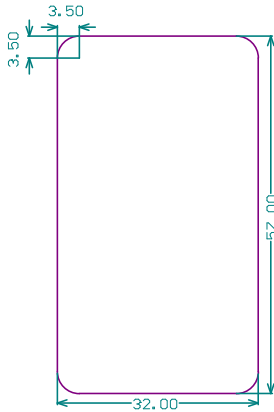
MountainerUSB.GMI
Bottom SilkScreen
1.0 \ 06.02.2012
CSA-GADP-MBUSB-001

Copyright:
Designer:

Filename:
Layer:

Version/Date:
Doc-Nr.:

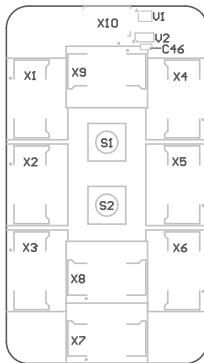




Basismaterial: FR4
Anzahl Lagen: 4
Dicke: 1.6mm
Beschichtung: 35um Cu
Oberflaeche: chemisch Sn

Doc.-Nr.: CSA-GADP-MBUSB-001
Version/Date: 1.0 / 06.02.2012
Layer: Mechanical dimensions
Filename: MountaineerUSB

Designer: C. Zill
Copyright: CSA Engineering AG
Hans Huber-Strasse 38
CH-4500 Solothurn



Doc.-Nr.: CSA-GADP-MBUSB-001
Version/Date: 1.0 / 06.02.2012
Layer: Top component placement
Filename: MountaineerUSB

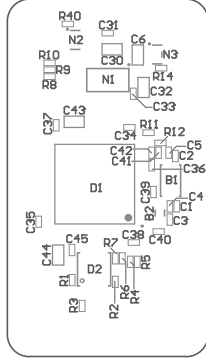
Designer: C. Zill
Copyright: CSA Engineering AG
Hans Huber-Strasse 38
CH-4500 Solothurn

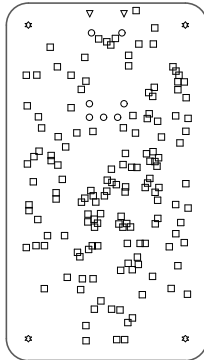
CH-4500 Solothurn
Haus Huber-Strasse 38
CSA Engineering AG
C. Zilli

MountainerUSB
Bottom component placement
1.0 \ 06.02.2012
CSA-GADP-MBUSB-001

Copyright:
Designer:

Filename:
Layer:
Version/Date:
Doc.-Nr.:





Symbol	Hit Count	Tool Size	Plated	Hole Type
□	147	0.3mm (11.811mil)	PTH	Round
○	7	0.9mm (35.433mil)	PTH	Round
▽	2	1.1mm (43.307mil)	PTH	Round
✱	4	3.3mm (129.921mil)	NPTH	Round
	160 Total			

Drilling Details

Doc.-Nr.: CSA-GADP-MBUSB-001
 Version/Date: 1.0 / 06.02.2012
 Layer: Drilling plan
 Filename: MountaineerUSB

Designer: C. Zill
 Copyright: CSA Engineering AG
 Hans Huber-Strasse 38
 CH-4500 Solothurn

