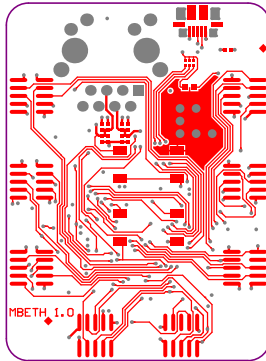


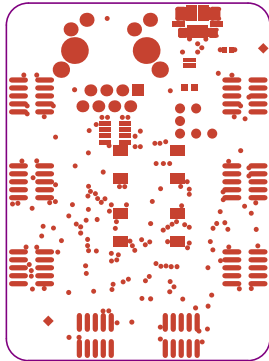
Doc.-Nr.: CSA-GADP-MBETH-001
 Version/Date: 1.0 / 06.02.2012
 Layer: Top Silkscreen
 Filename: MountaineerETH.GM16

Designer: C. Zill
 Copyright: CSA Engineering AG
 Hans Huber-Strasse 38
 CH-4500 Solothurn



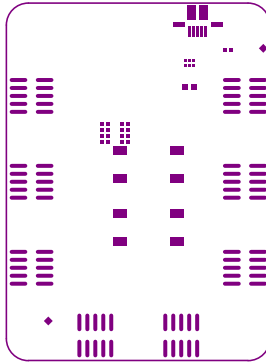
Doc.-Nr.: CSA-GADP-MBETH-001
Version/Date: 1.0 / 06.02.2012
Layer: **Top**
Filename: MountaineerETH.**GTL**

Designer: C. Zill
Copyright: CSA Engineering AG
Hans Huber-Strasse 38
CH-4500 Solothurn



Doc.-Nr.: CSA-GADP-MBETH-001
Version/Date: 1.0 / 06.02.2012
Layer: Top Solder
Filename: MountaineerETH.GTS

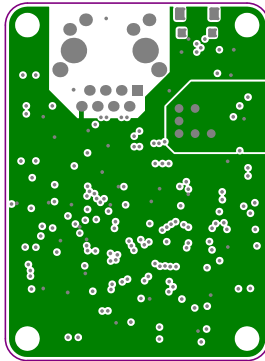
Designer: C. Zill
Copyright: CSA Engineering AG
Hans Huber-Strasse 38
CH-4500 Solothurn



Doc.-Nr.: CSA-GADP-MBETH-001
Version/Date: 1.0 / 06.02.2012
Layer: Top Paste
Filename: MountaineerETH.GTP

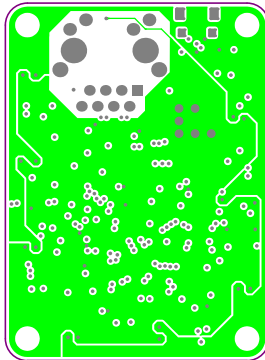
Designer: C. Zill
Copyright: CSA Engineering AG
Hans Huber-Strasse 38
CH-4500 Solothurn





Doc.-Nr.: CSA-GADP-MBETH-001
Version/Date: 1.0 / 06.02.2012
Layer: Internal 1 <GND>
Filename: MountaineerETH.G1

Designer: C. Zill
Copyright: CSA Engineering AG
Hans Huber-Strasse 38
CH-4500 Solothurn



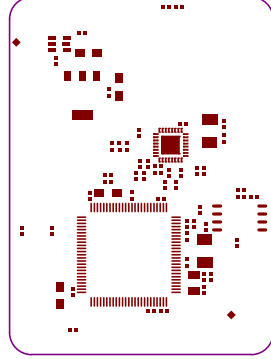
Doc.-Nr.: CSA-GADP-MBETH-001
Version/Date: 1.0 / 06.02.2012
Layer: Internal 2 (3V3)
Filename: MountaineerETH.G2

Designer: C. Zill
Copyright: CSA Engineering AG
Hans Huber-Strasse 38
CH-4500 Solothurn

CH-4500 Solothurn
Hans Huber-Strasse 38
CSA Engineering AG
C. Zilli
Designer:

Copyright:

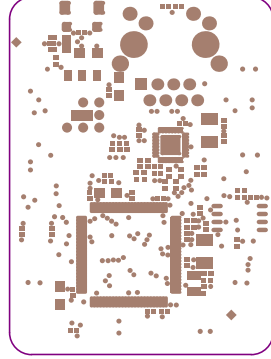
Filename: MountainierETH.OBP
Layer: Bottom Paste
Version/Date: 1.0 \ 06.02.2012
Doc-Nr.: CSA-GADP-MBETH-001



CH-4500 Solothurn
Hans Huber-Strasse 38
CSA Engineering AG
C. Zilli
Designer:

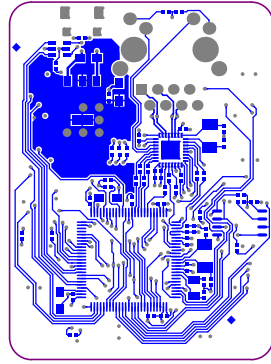
Copyright:

Filename: MountainierETH.OBS
Layer: Bottom Border
Version/Date: 1.0 \ 06.02.2012
Doc.-Nr.: CSA-GADP-MBETH-001





CH-4500 Solothurn	Designer:
Hans Huber-Strasse 38	Copyright:
CSA Engineering AG	
C. Zill	
MountainerETH.GBL	Filename:
Bottom	Layer:
1.0 \ 06.02.2012	Version/Date:
CSA-GADP-MBETH-001	Doc-Nr.:



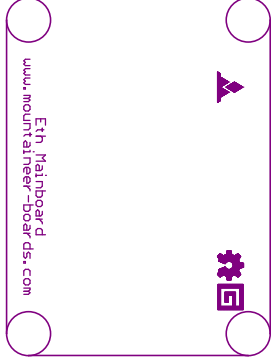
CH-4500 Solothurn
Hans Huber-Strasse 38
CSA Engineering AG
C. Zill

Copyright:
Designer:

MountaineerETH.GMI
Bottom SilkScreen
1.0 \ 06.05.2012
CSA-GADP-MBETH-001

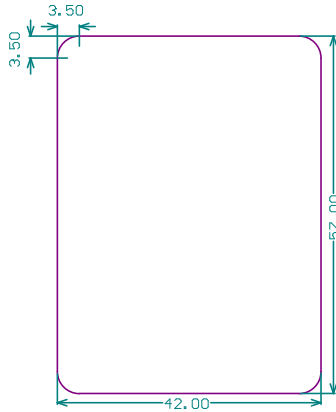
Filename:
Layer:
Version/Date:

Doc.-Nr.:





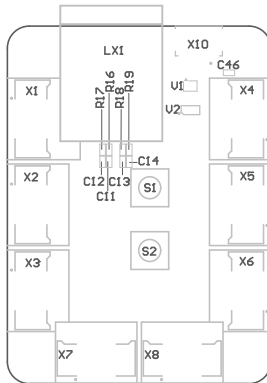
Basismaterial: FR4
Anzahl Lagen: 4
Dicke: 1.6mm
Beschichtung: 35um Cu
Oberflaeche: chemisch Sn



Doc.-Nr.: CSA-GADP-MBETH-001
Version/Date: 1.0 / 06.02.2012
Layer: Mechanical dimensions
Filename: MountaineerETH

Designer: C. Zill
Copyright: CSA Engineering AG
Hans Huber-Strasse 38
CH-4500 Solothurn



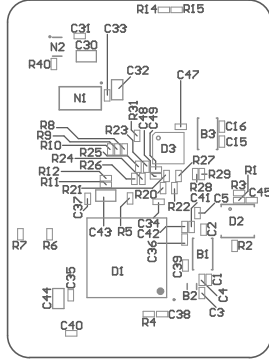


Doc.-Nr.: CSA-GADP-MBETH-001
 Version/Date: 1.0 / 06.02.2012
 Layer: Top component placement
 Filename: MountaineerETH

Designer: C. Zill
 Copyright: CSA Engineering AG
 Hans Huber-Strasse 38
 CH-4500 Solothurn

CH-4500 Solothurn
 Hans Huber-Strasse 38
 CSA Engineering AG
 C. Zilli
 Designer:

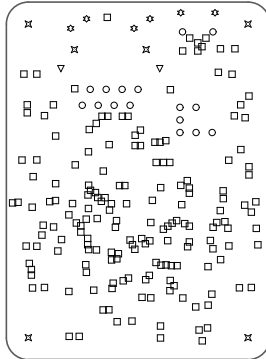
Filename: MountainerETH
 Layer: Bottom component placement
 Version/Date: 1.0 \ 06.02.2012
 Doc.-Nr.: CSA-GADP-MBETH-001





Symbol	Hit Count	Tool Size	Plated	Hole Type
□	176	0.3mm (11.811mil)	PTH	Round
○	16	0.9mm (35.433mil)	PTH	Round
☆	6	1.1mm (43.307mil)	PTH	Round
▽	2	1.7mm (66.929mil)	PTH	Round
✕	6	3.3mm (129.921mil)	NPTH	Round
	206 Total			

Drilling Details



Doc.-Nr.: CSA-GADP-MBETH-001
 Version/Date: 1.0 / 06.02.2012
 Layer: Drilling plan
 Filename: MountaineerETH

Designer: C. Zill
 Copyright: CSA Engineering AG
 Hans Huber-Strasse 38
 CH-4500 Solothurn

